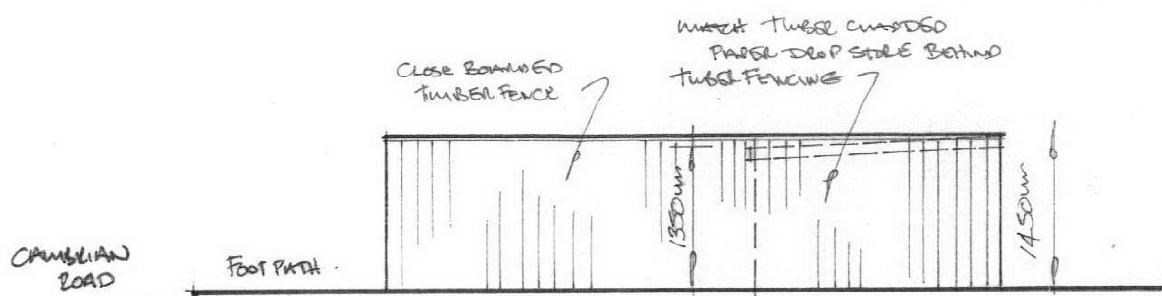
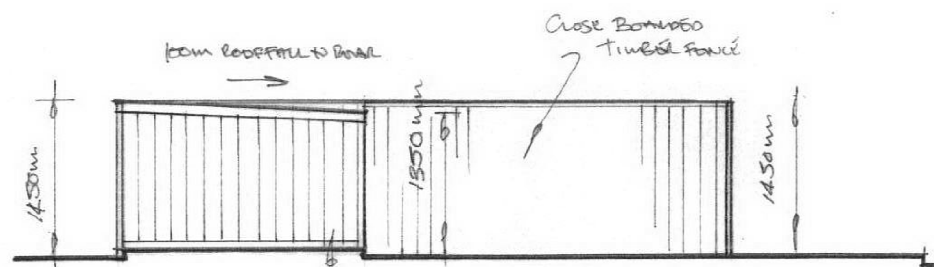


A' 14/8/08
 PAPER DROP STORE
 PRODUCED IN HEIGHT
 & POSITIONED CLOSE
 TO SHOP FRONT

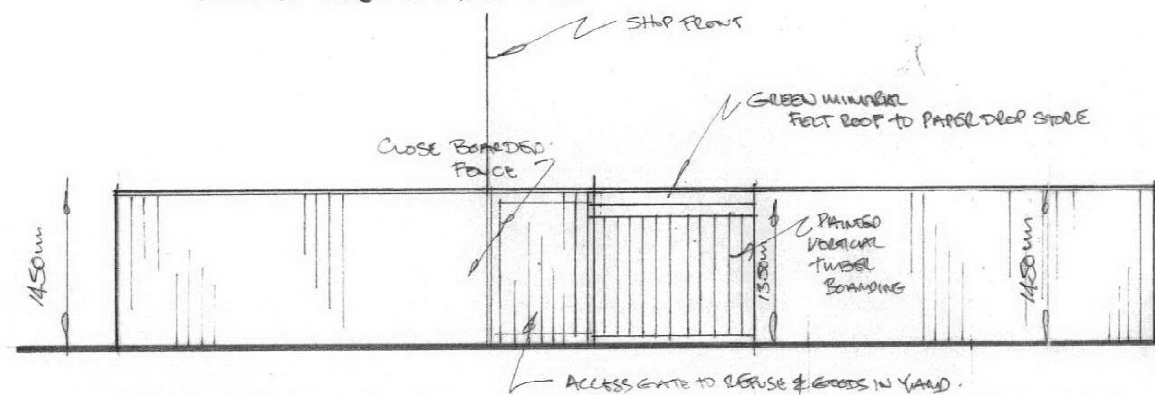
02.
 A



SOUTH ELEVATION 1:50



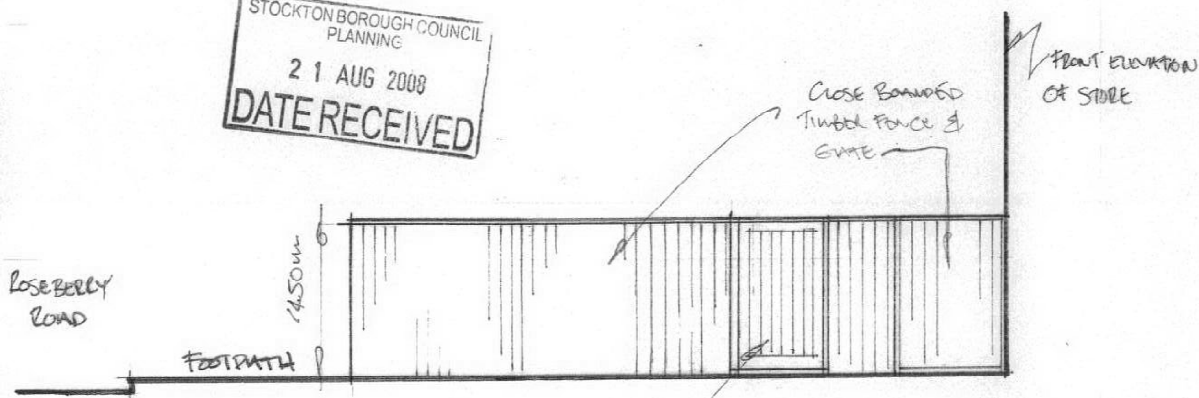
NORTH ELEVATION 1:50



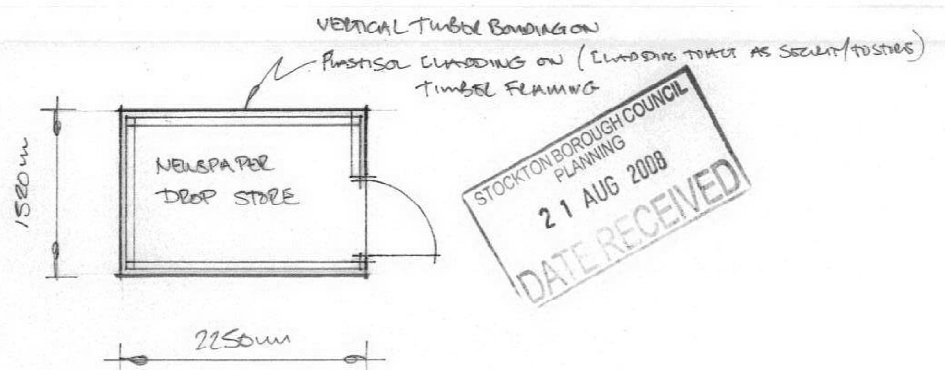
WEST ELEVATION 1:50

PAPER DROP STORE
 WALLS - TIMBER FRAMING WITH PASTISOL CHIPPING TO ACT AS SECURITY. EXTREMELY CHAP IN VERTICAL TIMBER PANELS TO MATCH & FENCINGS, TO BE PAINTED TO MATCH
 ROOF - GREEN MINERAL FELT ON EXTERNAL PLY OR PASTISOL CHIPPING ON TUBEL FRAMING - FALL 100mm TO ROVAL.

STOCKTON BOROUGH COUNCIL
 PLANNING
 21 AUG 2008
 DATE RECEIVED



EAST ELEVATION 1:50



PLAN 1:50

STOCKTON BOROUGH COUNCIL
 PLANNING
 21 AUG 2008
 DATE RECEIVED